

**SF1 Antibody (Center)**  
**Affinity Purified Rabbit Polyclonal Antibody (Pab)**  
**Catalog # AP14357C****Specification**

---

**SF1 Antibody (Center) - Product Information**

Application	WB,E
Primary Accession	<a href="#">Q15637</a>
Other Accession	<a href="#">Q64213</a> , <a href="#">NP_001171502.1</a> , <a href="#">NP_001171501.1</a> , <a href="#">NP_973724.1</a>
Reactivity	Human
Predicted	Mouse
Host	Rabbit
Clonality	Polyclonal
Isotype	Rabbit IgG
Calculated MW	68330
Antigen Region	212-241

**SF1 Antibody (Center) - Additional Information****Gene ID** 7536**Other Names**

Splicing factor 1, Mammalian branch point-binding protein, BBP, mBBP, Transcription factor ZFM1, Zinc finger gene in MEN1 locus, Zinc finger protein 162, SF1, ZFM1, ZNF162

**Target/Specificity**

This SF1 antibody is generated from rabbits immunized with a KLH conjugated synthetic peptide between 212-241 amino acids from the Central region of human SF1.

**Dilution**

WB~~1:1000

E~~Use at an assay dependent concentration.

**Format**

Purified polyclonal antibody supplied in PBS with 0.09% (W/V) sodium azide. This antibody is purified through a protein A column, followed by peptide affinity purification.

**Storage**

Maintain refrigerated at 2-8°C for up to 2 weeks. For long term storage store at -20°C in small aliquots to prevent freeze-thaw cycles.

**Precautions**

SF1 Antibody (Center) is for research use only and not for use in diagnostic or therapeutic procedures.

**SF1 Antibody (Center) - Protein Information**

**Name** SF1

**Synonyms** ZFM1, ZNF162

**Function** Necessary for the ATP-dependent first step of spliceosome assembly. Binds to the intron branch point sequence (BPS) 5'-UACU AAC-3' of the pre-mRNA. May act as transcription repressor.

**Cellular Location**

Nucleus.

**Tissue Location**

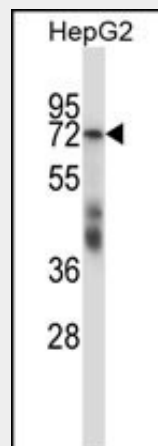
Detected in lung, ovary, adrenal gland, colon, kidney, muscle, pancreas, thyroid, placenta, brain, liver and heart

### SF1 Antibody (Center) - Protocols

Provided below are standard protocols that you may find useful for product applications.

- [Western Blot](#)
- [Blocking Peptides](#)
- [Dot Blot](#)
- [Immunohistochemistry](#)
- [Immunofluorescence](#)
- [Immunoprecipitation](#)
- [Flow Cytometry](#)
- [Cell Culture](#)

### SF1 Antibody (Center) - Images



SF1 Antibody (Center) (Cat. #AP14357c) western blot analysis in HepG2 cell line lysates (35ug/lane). This demonstrates the SF1 antibody detected the SF1 protein (arrow).

### SF1 Antibody (Center) - Background

This gene encodes a nuclear pre-mRNA splicing factor. The encoded protein specifically recognizes the intron branch point sequence and is required for the early stages of spliceosome assembly. Alternate splicing results in multiple transcript variants.

**SF1 Antibody (Center) - References**

Jeyabalan, J., et al. PLoS ONE 5 (5), E10646 (2010) :  
Corsini, L., et al. J. Biol. Chem. 284(1):630-639(2009)  
Rino, J., et al. Mol. Cell. Biol. 28(9):3045-3057(2008)  
Olejnik-Schmidt, A.K., et al. Arch. Virol. 153(5):983-990(2008)  
Sugiyama, N., et al. Mol. Cell Proteomics 6(6):1103-1109(2007)

**SF1 Antibody (Center) - Citations**

- [The Epstein-Barr virus EBNA1 protein modulates the alternative splicing of cellular genes.](#)